

APPROACH ROAD INTERSECTION TABLE							
NO.	OBJECT TYPE	OBJECT HEIGHT	ABOVE GROUND LEVEL (AGL)	EXISTING APPROACH SURFACE ELEVATION	EXISTING APPROACH SURFACE PENETRATION	SURFACE REFERENCE	DISPOSITION
5024	PRIVATE ROAD (+15' ADJUSTMENT ADDED)	10.00'	7656.50'	7654.86'	1.62'	RUNWAY 35 APPROACH	TO BE LIT/REMOVED*
5025	PUBLIC ROAD (+15' ADJUSTMENT ADDED)	15.00'	7662.90'	7659.94'	2.96'	RUNWAY 35 APPROACH	TO BE LIT/REMOVED*
5026	PUBLIC ROAD (+15' ADJUSTMENT ADDED)	15.00'	7668.00'	7669.26'	-31.26'	RUNWAY 35 APPROACH	TO BE LIT/REMOVED*
5082	PUBLIC ROAD (+15' ADJUSTMENT ADDED)	15.00'	7663.00'	7655.40'	7.60'	RUNWAY 35 APPROACH	TO BE LIT/REMOVED*
5083	PUBLIC ROAD (+15' ADJUSTMENT ADDED)	15.00'	7661.00'	7664.38'	-2.78'	RUNWAY 35 APPROACH	TO BE LIT/REMOVED*
5084	PUBLIC ROAD (+15' ADJUSTMENT ADDED)	15.00'	7668.00'	7695.32'	-27.32'	RUNWAY 35 APPROACH	TO BE LIT/REMOVED*
5085	PUBLIC ROAD (+15' ADJUSTMENT ADDED)	15.00'	7667.00'	7719.51'	-52.51'	RUNWAY 35 APPROACH	TO BE LIT/REMOVED*

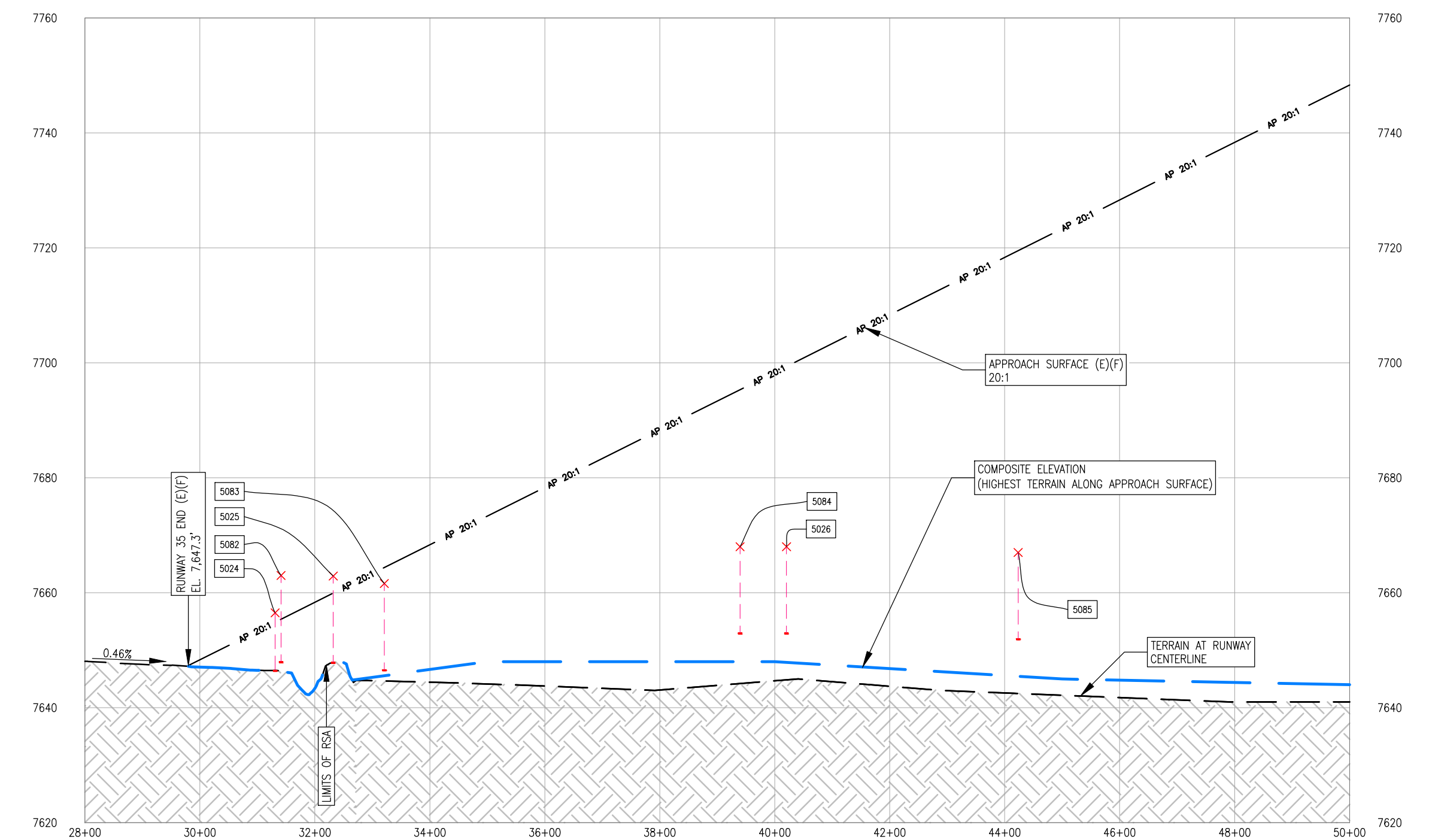
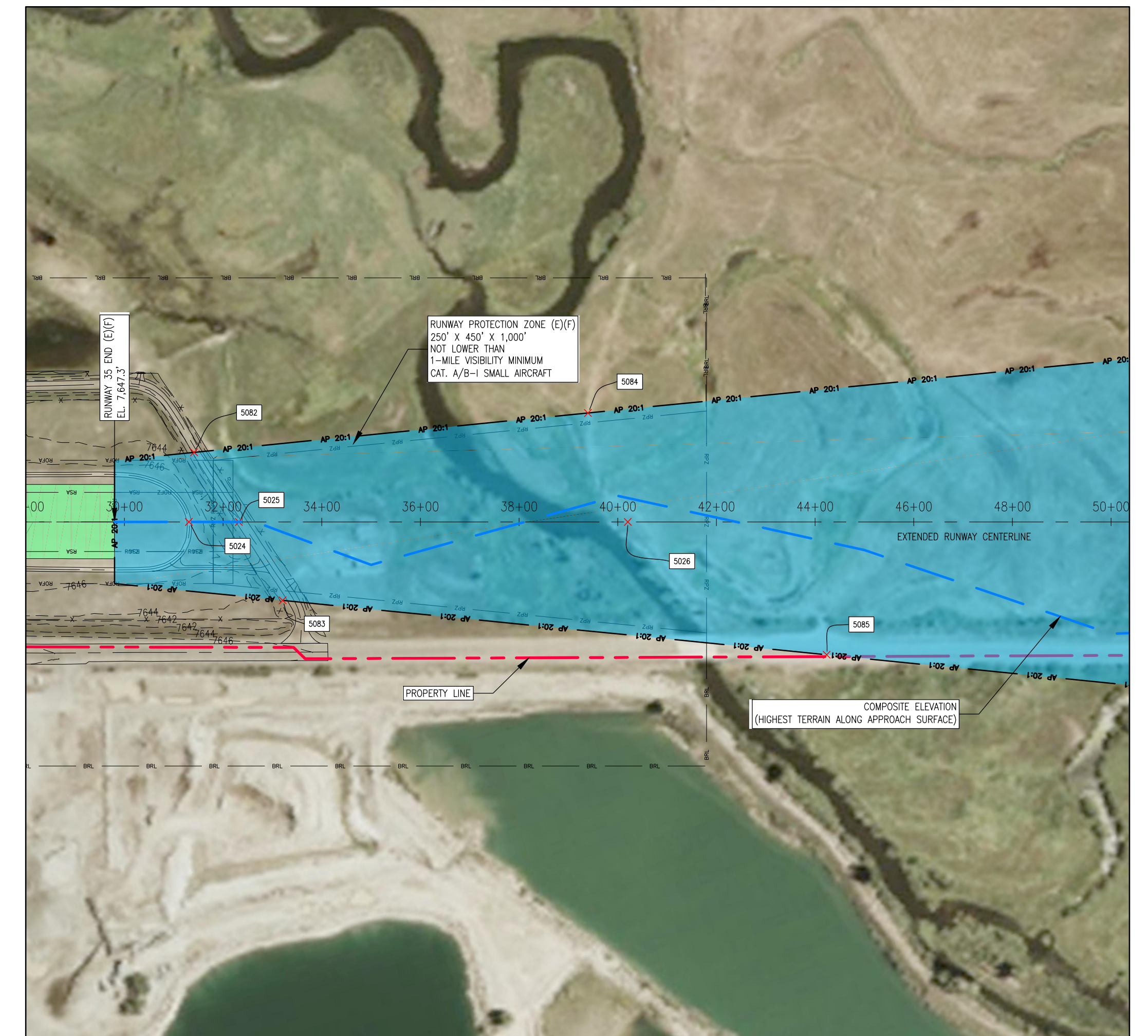
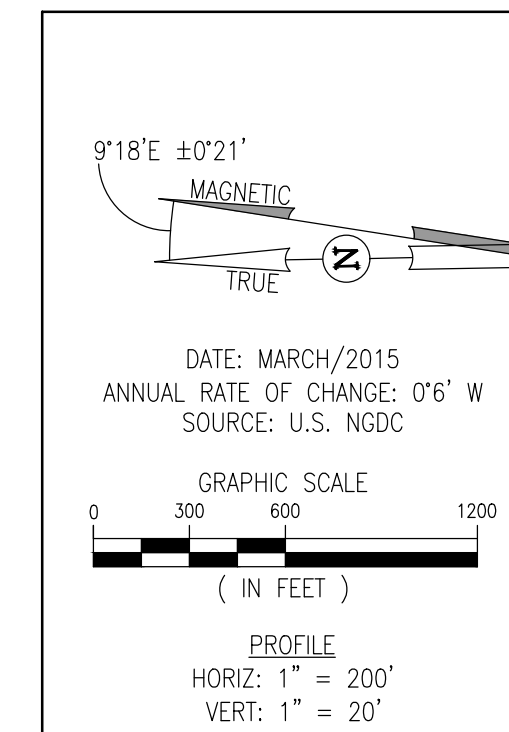
*FINAL DETERMINATION PENDING FAA AERONAUTICAL STUDY

NOTES

- SERVICE ROADS PROVIDE ACCESS TO THE AIRPORT'S NAVIGATIONAL AIDS. ACCESS TO THESE ROADS IS CONTROLLED.
- EXISTING AND FUTURE CONDITIONS ARE SHOWN AS (E)(F).

SOURCE

- THIS SITE PLAN LINE WORK AND AERIAL IMAGE IS BASED ON THE PLANIMETRIC MAPPING & ORTHO-IMAGERY INFORMATION COMPILED BY WOOLPERT, INC. IN 2014.
- OBSTRUCTION SURVEY DATA WAS COMPILED BY WOOLPERT, INC. IN 2014.
- ALL HORIZONTAL COORDINATES - NAD83/2011, ALL VERTICAL COORDINATES - NAVD88



I:\Projects\GUC\2015\PLANS\14-15-GUC-AUP-ASD-RWP-17-16.dwg
 Nov 18, 2016 - 9:03am
 Robert Bell

JVIATION®



DES: R.L.B.	ISSUE RECORD			
	NO.	BY	DATE	DESCRIPTION
DR: R.L.B.	1	S.V.B.	11/17/16	FINAL
CH: S.V.B.				
APP: S.V.B.				

THE PREPARATION OF THIS DOCUMENT MAY HAVE BEEN SUPPORTED, IN PART, THROUGH THE AIRPORT IMPROVEMENT PROGRAM FINANCIAL ASSISTANCE FROM THE FEDERAL AVIATION ADMINISTRATION AS PROVIDED UNDER TITLE 49 U.S.C. SECTION 47104. THE CONTENTS DO NOT NECESSARILY REFLECT THE OFFICIAL VIEWS OR POLICY OF THE FAA. ACCEPTANCE OF THIS AIRPORT LAYOUT PLAN BY THE FAA DOES NOT IN ANY WAY CONSTITUTE A COMMITMENT ON THE PART OF THE UNITED STATES TO PARTICIPATE IN ANY DEVELOPMENT DEPICTED THEREIN NOR DOES IT INDICATE THAT THE PROPOSED DEVELOPMENT IS ENVIRONMENTALLY ACCEPTABLE OR WOULD HAVE JUSTIFICATION IN ACCORDANCE WITH APPROPRIATE PUBLIC LAWS.

AIRPORT
LAYOUT PLAN

INNER APPROACH SURFACE DRAWING -
RUNWAY 35

SHEET NO.
15 of 19

AIP PROJ. NO. 3-08-0030-048	JVIATION PROJ. NO. 2014.GUC.03	DATE: NOVEMBER, 2016
--------------------------------	-----------------------------------	-------------------------